

# Walberswick Village News

January 2024 | Issue 326

*Happy New Year*

## Maureen Thompson, 6 August 1930 - 5 December 2023

It was with great sadness to all who knew her to learn that Maureen passed away at the James Paget Hospital after surgery. Maureen and her husband, Don, fully immersed themselves in village life following their arrival in Walberswick in 1988. They were involved in the history and jazz groups, also organising the Heritage Hut. During this time, Maureen was still working part time as a physiotherapist. Collecting for charities also played a big part in her life, earning her the title of "The Raffle Queen". She loved her dogs, bridge and helping people and friends whenever she could. We will miss your strength of character, guidance and her "nothing is too much trouble" attitude. Rest in peace.

**Jane, Nigel and families**



## Thank you all

Thank you to everyone who donated to Cancer Research UK this year by signing the **Christmas Card List** held in the Tuck Shop. The amount raised was £225.

**Pat Lancaster**

Our thanks to everyone who supported us in our first year of running the **Cancer Research UK Christmas Fayre**. It was an amazing effort by all the volunteers, who so generously gave up their time to help us with everything from painting a sign, showing us the ropes, running stalls, to donating and making items, providing refreshments and much more. And thanks to the many people who turned up on the day and so generously got into the spirit of things by buying items, supporting the raffle and bottle tombola, and bidding in the auction. We raised an astonishing £6,581. **Guy & Sheila Parry**

Thank you for the donations made on the beach on Christmas Day to the RNLI. A total of £473.40 was raised. **Karen Lewis**

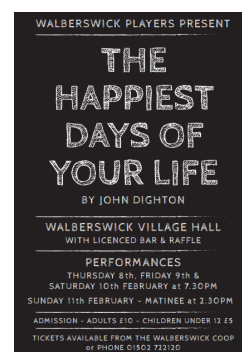
## New village-related websites

**The Friends of St Andrew's** now has its own website, which can be found at [friendsofstandrews.org.uk](http://friendsofstandrews.org.uk). Online booking is available for events that will raise funds to help maintain the buildings and grounds of the church.

**Walberswick against LionLink, WALL**, the campaign against the threat posed by National Grid's proposed landfall for LionLink at Walberswick, keeps residents up-to-date on the group's activities, as well as supporting the fundraising needed to challenge the proposal. Pop over to [wall-update.org](http://wall-update.org) to find out more. **Editor**

## The Happiest Days of Your Life

It's that time of year again when post-Christmas we are all looking for something to brighten up the long winter nights. Fortunately, here in Walberswick, we have just the cure. The panto group will be performing the well-known 1950s farce, *The Happiest Days of Your Life*, on 8, 9 and 10 February at 7.30pm each evening, with an additional matinee on Sunday 11 February at 2.30pm. When an evacuated girls' independent school is billeted in an unprepared boys' independent school, inevitable chaos ensues, with hilarious results. This clash of the sexes and of cultures is fun for all the family and will bring back happy (and not so happy) memories. Tickets, costing £10 for adults and £5 for children under 12, are available from the Co-op or from Mark and Jean Waller on 01502 722120. **Rob Lynch**



## The Anchor

Happy New Year and thanks to all for your support at our Christmas events.

In January, we will be closed on Mondays and Tuesdays but for the rest of the week we will be offering our cosy bars, open fires, and a warm welcome.

We will have new and delicious additions to our menus and booking is strongly advised

[info@anchoratwalberswick.com](mailto:info@anchoratwalberswick.com) | 01502 722112  
[www.anchoratwalberswick.com](http://www.anchoratwalberswick.com)



## Village Precept

The Parish Council approved the 2024/25 budget at its December meeting and is delighted to be able to keep the precept unchanged for the fourth consecutive year at £20,000. Residents will, however, see a very small increase in the amount of precept they pay when they receive their Council tax bill. This is not a result of an increase by the Parish Council but because of slight shrinkage in the precept tax base, most likely caused by additional houses in the village changing to holiday lets and therefore paying business rates that do not include any precept. Both Suffolk County Council (SCC) and East Suffolk District Council (ESDC) are, however, expected to increase their Council tax rates by just under five percent as they face greatly increased costs, especially for social care and other services, whilst funding from the national government remains flat or decreases in real terms.

## LionLink

At the last Parish Council meeting, Suffolk County Councillor Richard Smith announced that his office had received over 200 objections to the LionLink proposals from Walberswick residents. He said this was an amazing response from a village our size and demonstrated the strength of feeling against the proposed development. Our thanks to everyone who got engaged at this pre-consultation stage; well done Walberswick! Cllr Smith confirmed that SCC had objected to the Walberswick landing site and District Councillor David Beavan confirmed that ESC had also submitted their objections to LionLink. We will now need to wait to see what comes back at the consultation phase.

## Play equipment

The Parish Council are delighted to announce that the first phase of the repair/refurbishment of the toddler play area next to the playing field has been completed. Subject to confirmation of funding, three new pieces of play equipment will be ordered as a second phase (a replacement for the broken "springy", a birds nest swing to replace the "end of life" flat swing and a see-saw) and which will be installed over the next few months.

## Flagpole

For some time now the village flagpole outside the Village Hall has been damaged as a result of a vehicle accident, making changing the flag very difficult. The Village Hall Management Committee and Parish Council have agreed to jointly purchase a replacement flagpole, which will then be put into the ownership of the Parish Council and will be put onto the Parish Council asset register.

## Next Parish Council meeting

The next meeting will be held on Monday, 15 January at 7pm in the Heritage Hut and is open to members of the public. Full details will be published on the village website, or for further information contact the Parish Clerk at [clerk@walberswick-pc.gov.uk](mailto:clerk@walberswick-pc.gov.uk).



## Art for WALL postcards

To raise funds for the campaign Walberswick Against LionLink (WALL), eleven local artists each created and donated a piece of art connected with the village, which is being auctioned. Information on the online auction, which closes on 3 January, and details of each work of art can be found at [tinyurl.com/artforwall](https://tinyurl.com/artforwall).

To accompany the auction, a set of colour postcards was created featuring each piece of art. A small number of postcards are still available and can be purchased at £10 a set. If you would like to support WALL by purchasing a set of postcards, please email **Liz Green** at [liz.green@mac.com](mailto:liz.green@mac.com) or send a message via text or WhatsApp to 07710 031503. Collection from the village and payment in cash please.

## Tuesday Morning Exercise & Dance Classes with Coral in the Walberswick Village Hall

Improve strength, mobility, co-ordination,  
balance and core stability with **Pilates**  
9.15-10.15am & 10.30-11.30am

Dance and keep fit the fun way with **Zumba Gold**  
11.45am - 12.30pm

**Booking essential. For more information email**  
[coralstebbingdance@gmail.com](mailto:coralstebbingdance@gmail.com)

## Planning applications

At the time of publication, the following properties were awaiting a decision on their planning applications:

**Thrums**, Seven Acres Lane | **Manor Lodge**, The Street (tree) | **Rosemary Cottage**, The Street | **Briar Cottage**, The Green | **Dutch House**, The Street | **Mulberry House**, Millfield Road | **Pebbles**, The Lea | **The Net Shed Studio**, Ferry Road | **Wayland Cottage**, The Street | **1 Adams Lane** | **Seacroft**, Millfield Road |

The latest applications and Advisory Group Reports, can be found on the planning page on the Walberswick [website](#).

## Accommodation needed for INK Festival 11-15 April 2024

Every year, Walberswickians have kindly provided rooms for some of the actors and directors involved in the INK Festival ([www.inkfestival.org](http://www.inkfestival.org)). With increasing numbers taking part in 2024, we require even more accommodation and would be really grateful for any offers. We would be delighted to offer a pair of festival tickets as a way of showing our enormous gratitude. INK is a charity with no core funding and is run by volunteers. Any help or support is hugely appreciated. Please contact Tor at [tor@infestival.org](mailto:tor@infestival.org) if you can help. **Julia Sowerbutts**

## January - Kitchen and Garden

Happy New Year to one and all.

January is the month of new beginnings. In the garden it is time to start thinking about the year ahead - looking through seed catalogues, ordering seeds and summer flowering bulbs like dahlia and gladioli and planning where and when to plant them.

Early seed potatoes can be chitted - laid out in trays in a cool, frost free place out of direct sunlight. To get an early yield of rhubarb, cover the crown with a forcer.

Sweet peas can be sown later this month, or in early February, in a frost free environment. A January sowing enables the plants to develop strong roots and provides larger plants to set out after the frosts.

In the kitchen, it is time to make marmalade. The best oranges to use are Seville oranges which should be in the shops now until about the middle of February. Their skins are particularly thick and naturally rich in pectin which is needed for a good set. **The Horticultural Committee**



## Diary Dates



### WI Monthly Meeting

Thursday, 4 January, 2.30pm in the Village Hall

John Hammond from St Elizabeth Hospice will be talking about the hospice and its work. Visitors and new members welcome. **Muriel Wortley**

### Gin and Sing

Sunday, 14 January, 5pm in St Andrew's Church

Festival of lessons and carols for the Feast of the Epiphany. **Julia Josephs**

### Concert in the Church: Amy Hollinrake

Friday, 19 January, 6pm in St Andrew's Church

Join the Friends of St Andrews for an evening concert that features the young English singer-songwriter, Amy Hollinrake, and her hauntingly beautiful and earthy brand of contemporary folk, accompanied by her band. Tickets are £20 and available at the Tuck Shop or via the new Friends of St Andrews website, [www.friendsofstandrews.org.uk](http://www.friendsofstandrews.org.uk). Doors open at 5.30pm. **Clive Brynley-Jones**

### Walberswick Against LionLink (WALL)

Saturday, 27 January, 10.30am in the Village Hall

Public Meeting - "What Happens Next?" **David Pelly**

### The Happiest Days of Your Life

Thursday, Friday & Saturday, 8, 9 & 10 February at 7.30pm, and Sunday 11 February at 2.30pm in the Village Hall

The panto group will be performing the well-known 1950s farce, The Happiest Days of Your Life. Tickets are £10 for adults and £5 for children under 12, and are available from the Tuck Shop or from Mark and Jean Waller on 01502 722120. **Rob Lynch**

## Church Matters

### St Andrew's Church Walberswick

#### Team Rector

**Revd Russ Gant**

[russ.gant@solebayteamministry.co.uk](mailto:russ.gant@solebayteamministry.co.uk)  
[solebayteamministry.co.uk](http://solebayteamministry.co.uk)

### January 2024 Services

**Sunday, 7 January 11.15am**

Epiphany Sung Eucharist  
Joined by Blythburgh  
Revd Judy Miller

**Sunday, 14 January 5pm**

Gin and Sing  
2nd Sunday of Epiphany  
Readings and carols  
Revd Russ Gant

**Sunday, 21 January 11.15am**

3rd Sunday of Epiphany  
Sung Eucharist  
Revd Margaret King

**Sunday, 28 January 11.15am**

4th Sunday of Epiphany  
Family Service  
Revd Judy Miller

**Every Wednesday 10am**

Holy Communion  
Coffee on first Wednesday

### Commemorative Flowers

**9 January** - John & Denise Brentnall  
for Ralph & Margaret Erskine

**16 January** - Judy Morton for her  
parents Bill & Olive Quenzer

**17 January** - Pat Atherton for her  
sister Betty Abnet

## Community Services

**Mobile Library:** Friday,  
5 January 2.15pm-2.45pm,  
Village Hall car park.

**Norwich Bus:** Thursday morning,  
18 January. Please contact  
Mandy Erlenbach on 07590  
697575 to book a place.

**Post Office:** Tuesdays 1pm-3pm;  
Thursdays 10am-12 noon,  
Village Hall Annex.

VISIT THE VILLAGE WEBSITE

[WALBERSWICK.SUFFOLK.GOV.UK](http://WALBERSWICK.SUFFOLK.GOV.UK)

The next edition of the Village News will be published on 1 February 2023. The copy deadline is noon on 25 January 2024 and submissions should be sent to the editor at [walberswicknews@gmail.com](mailto:walberswicknews@gmail.com).

**Paul Bradley Ltd  
ARCHITECTURE**

Portland House, 43 High Street, Southwold  
Suffolk IP18 6AB t: **01502 725222**  
[www.paulbradleyarchitecture.com](http://www.paulbradleyarchitecture.com)

**RICHARD KETT HORTICULTURE**

Nursery trained, third generation  
Award-winning gardener  
**07503 048554**

**GC WILSON CARPENTRY & CONSTRUCTION**

Complete Building Service  
*New builds, extensions, conversions  
and general maintenance*  
Call Gareth: **07717 507412** or **01986 875658**

**KW CLARKE BUTCHERS**

Family butcher and poulterer, general store  
Locally produced meat - Emmerdale Red Poll Beef  
Bramfield, Halesworth IP19 9JH  
**01986 784244** - [kwclarkesorder@gmail.com](mailto:kwclarkesorder@gmail.com)

**Alex Godfrey  
BIKE MECHANIC**

Qualified, insured and mobile  
Walberswick, @alexbikemech  
**07963 390057**

**AV-CONSTRUCTION**

**Specialists in Timber construction**

Complete Building Service  
[www.av-construction.co.uk](http://www.av-construction.co.uk)  
**info@av-construction.co.uk | 07453 360857**

**RUTHY'S WAY WINDOW CLEANING**

Walberswick, Suffolk  
*All types of windows professionally cleaned*  
Call SHANE: **01502 722595** or **07432 152207**

**THE HOUSEKEEPING COMPANY**

Cleaning between lets, second homes cared for  
Full caretaking service  
Professional laundry service  
**01502 725746 | 07795 560245**

**OUTNEY MEADOW LTD & CR HANCY GAS**

Outney Meadow Caravan Park, Bungay NR35 1HG  
*Camping and canoe hire by the Waveney*  
**01986 892338** - [gas@outneymeadow.co.uk](mailto:gas@outneymeadow.co.uk)

**SOUTHWOLD VOLUNTARY HELP CENTRE**

**Shopping, Befriending, Transport, Errands**

Can we help you, or can you help us?  
Contact **01502 724549**  
24-hour answerphone - [www.southwoldvhc.com](http://www.southwoldvhc.com)  
Charity No. 1164155

**MARK BOTWRIGHT'S TREE SERVICES**

All aspects of tree surgery at competitive rates  
Fully qualified & insured  
**01502 476334** or **07749 524778**

**Southwold Carpets, Curtains & Blinds Ltd**

*For all Flooring, Curtains, Blinds and Accessories,  
Haberdashery, Wool, Home & Giftware, & more*  
Visit us at Unit 1, Southwold Business Centre,  
St Edmunds Road, Southwold, IP18 6JU  
**01502 724948** / [southwoldcarpets@btconnect.com](mailto:southwoldcarpets@btconnect.com)  
[www.southwoldcarpets.co.uk](http://www.southwoldcarpets.co.uk)

**MANTINS SOLICITORS & NOTARIES**

*Residential & Commercial Conveyancing  
Wills, Probate, Powers of Attorney & Notarial Work*  
23a High Street, Southwold, Suffolk IP18 6AD  
Tel: **01502 724750** - [www.mantins.co.uk](http://www.mantins.co.uk)

**EAST COAST LINEN HIRE**

*Offering high quality linen & soft towels*  
Laundering service for commercial  
& domestic clients  
**Nicky 07809 771121** or **01986 875896**  
[eastcoastlinenhire@gmail.com](mailto:eastcoastlinenhire@gmail.com)

**IAN POOLE DECORATING**

Painting, Tiling & Wallpapering  
Hand-painted kitchens & furniture  
Email: [decor@ipooledecorator.co.uk](mailto:decor@ipooledecorator.co.uk)  
[www.ipooledecorator.co.uk](http://www.ipooledecorator.co.uk) | Reliable & fully insured  
**01502 710257 / 07952 022436**

**THE MORTON PARTNERSHIP  
Consultant Civil & Structural Engineers  
Historic Building Specialists**

*We specialise in low cost repair options  
to buildings and can assist you with  
any building problem*

**Suffolk Office:** Brunel House, Norwich Rd,  
Halesworth, Suffolk IP19 8HX **01986 875651**  
**London Office:** Old Timber Yard House  
55 The Timber Yard, Drysdale Street, London N1 6ND

**COOPER & DENNY LTD - Building Contractors**

*Professional service & free estimates*  
26 Fountain Way, Reydon IP18 6SZ  
[info@cooperdenny.com](mailto:info@cooperdenny.com)  
**01502 723366**

Advertising Manager: Penny Fox  
[pennyfox49@hotmail.com](mailto:pennyfox49@hotmail.com) | 07990 994384